



**AXIS COLLECTION** COORDINATES

---

**MAYER**FABRICS





**FEDORA**  
621-056 Dew



**FEDORA**  
621-016 Charcoal



**FEDORA**  
621-006 Bitumen



**FEDORA**  
621-046 Light Grey



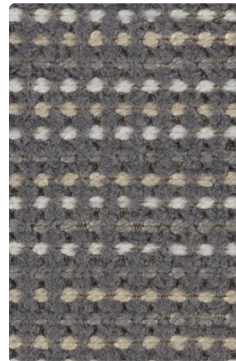
**FEDORA**  
621-017 Fawn



**CASPIAN**  
329-007 Almond



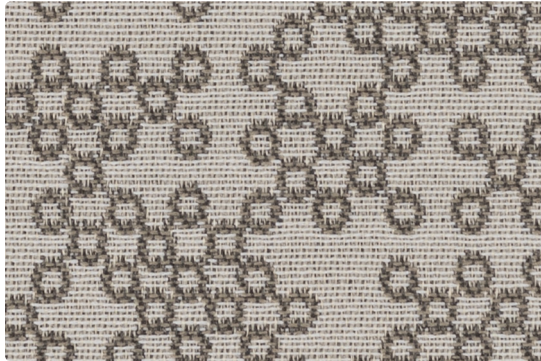
**ARCADE**  
AC-017 Latte



**CASPIAN**  
329-000 Mushroom



**LOOP**  
637-000 Driftwood



**LOOP**  
637-007 Mineral



**EDITOR**  
WC920-000 Mushroom



**MIDWAY**  
MW-000 Stone



**MIDWAY**  
MW-016 Haze



**EDITOR**  
WC920-006 Mineral



**ARCADE**  
AC-006 Chrome



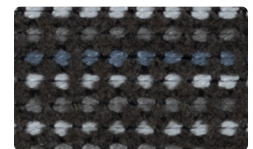
**CONNECT**  
635-006 Charcoal



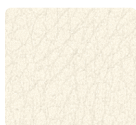
**VERTEX**  
638-006 Granite



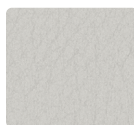
**ARCADE**  
AC-036 Smoke



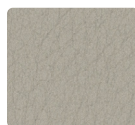
**CASPIAN**  
329-016 Cinder



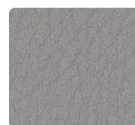
**NOBLE**  
NB-047 White



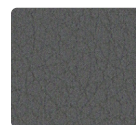
**NOBLE**  
NB-056 Folkstone



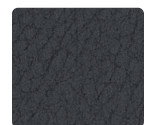
**NOBLE**  
NB-036 Dove



**NOBLE**  
NB-026 Greige



**NOBLE**  
NB-046 Charcoal



**NOBLE**  
NB-006 Onyx

Additional colors are available. Please refer to the Mayer Fabrics website.

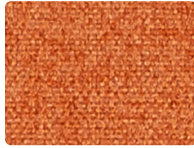




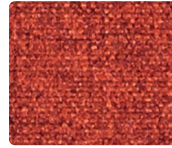
**FEDORA**  
621-000 Mink



**FEDORA**  
621-002 Topaz



**FEDORA**  
621-019 Tangelo



**FEDORA**  
621-009 Persimmon



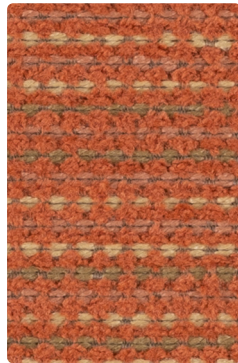
**FEDORA**  
621-001 Ruby



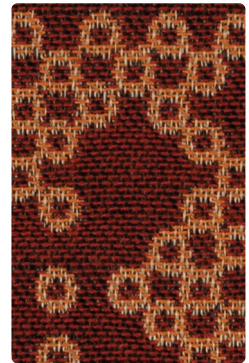
**MIDWAY**  
MW-027 Wheat



**EDITOR**  
WC920-002 Topaz



**CASPIAN**  
329-009 Tangelo



**LOOP**  
637-001 Tomato



**VERTEX**  
638-009 Mango



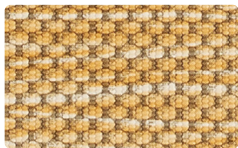
**ARCADE**  
AC-009 Penny



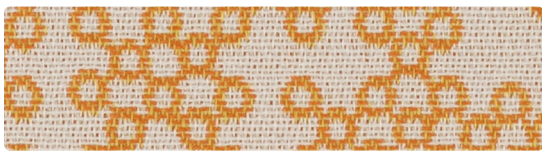
**EDITOR**  
WC920-011 Firebrick



**ARCADE**  
AC-002 Popcorn



**MIDWAY**  
MW-002 Sunshine



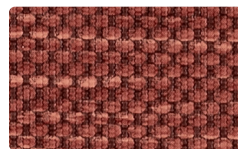
**LOOP**  
637-009 Tangelo



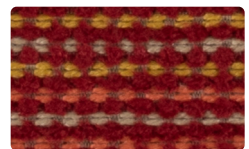
**CONNECT**  
635-009 Spice



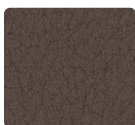
**VERTEX**  
638-001 Tomato



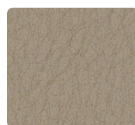
**MIDWAY**  
MW-001 Persimmon



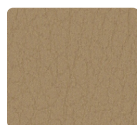
**CASPIAN**  
329-011 Sunset



**NOBLE**  
NB-000 Java



**NOBLE**  
NB-067 Stone



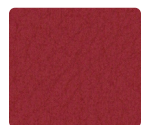
**NOBLE**  
NB-017 Camel



**NOBLE**  
NB-019 Spice



**NOBLE**  
NB-009 Apricot



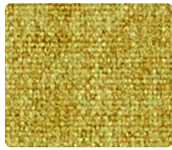
**NOBLE**  
NB-001 Paprika

Additional colors are available. Please refer to the Mayer Fabrics website.

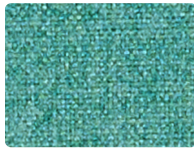




**FEDORA**  
621-023 Eucalyptus



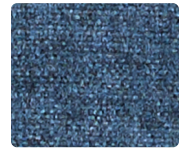
**FEDORA**  
621-013 Citron



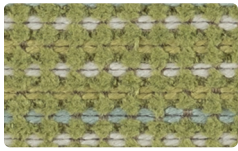
**FEDORA**  
621-043 Aquamarine



**FEDORA**  
621-053 Aegean



**FEDORA**  
621-014 Indigo



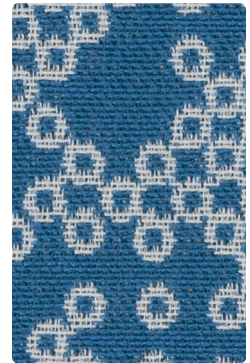
**CASPIAN**  
329-003 Spring



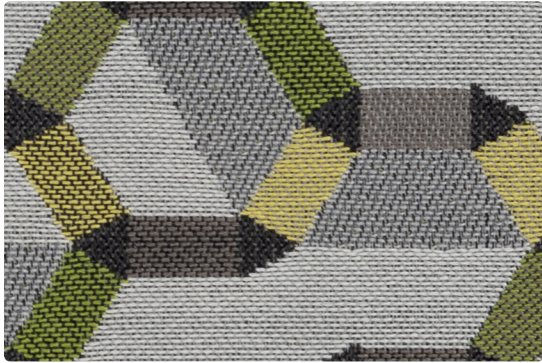
**LOOP**  
637-003 Citron



**EDITOR**  
WC920-013 Grotto



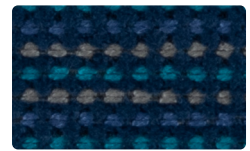
**LOOP**  
637-024 Marine



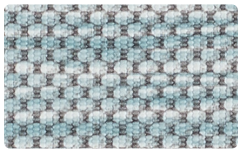
**CONNECT**  
635-003 Spring



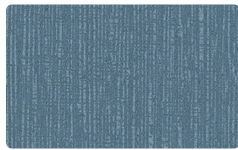
**ARCADE**  
AC-024 Laguna



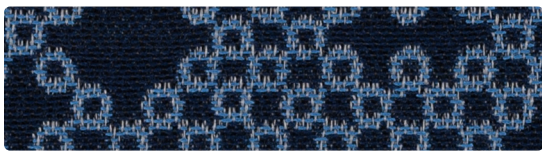
**CASPIAN**  
329-024 Marine



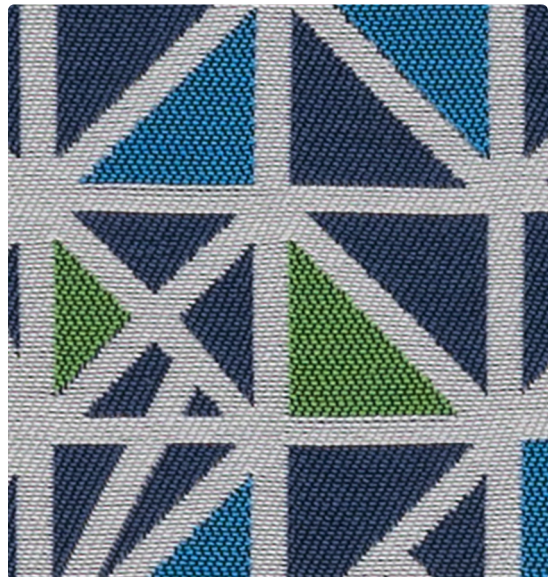
**MIDWAY**  
MW-023 Spa



**ARCADE**  
AC-014 Sky



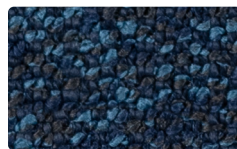
**LOOP**  
637-034 Cobalt



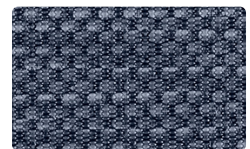
**VERTEX**  
638-024 Marine



**CONNECT**  
635-004 Cobalt



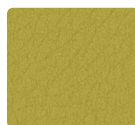
**EDITOR**  
WC920-014 Ink



**MIDWAY**  
MW-004 Indigo



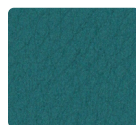
**NOBLE**  
NB-002 Dijon



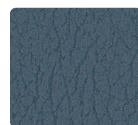
**NOBLE**  
NB-013 Citrus



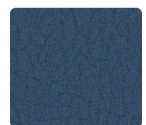
**NOBLE**  
NB-003 Basil



**NOBLE**  
NB-014 Teal



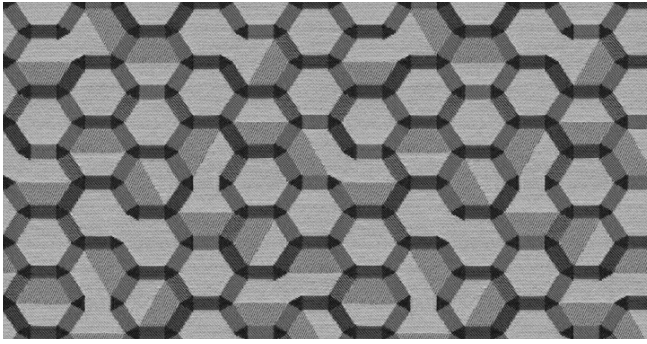
**NOBLE**  
NB-024 Blue Fog



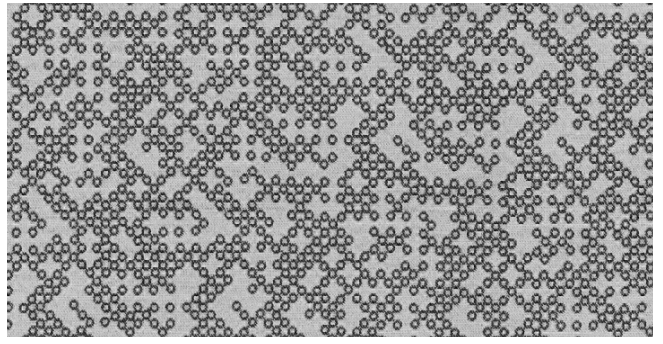
**NOBLE**  
NB-004 Indigo

Additional colors are available. Please refer to the Mayer Fabrics website.

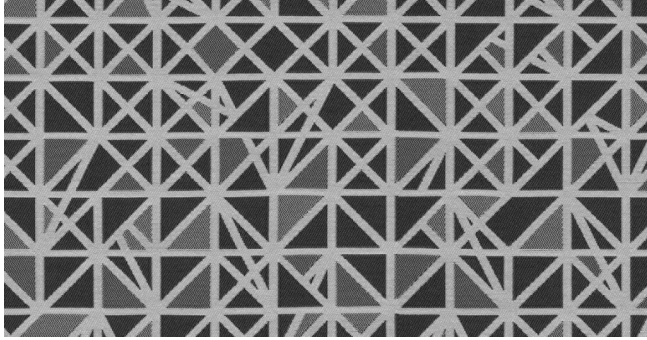




CONNECT – Repeat: 7.25" H, 10.75" V



LOOP – Repeat: 14.5" H, 7.375" V



VERTEX – Repeat: 14.625" H, 34" V



# TECHNICAL INFORMATION

## Seating Coordinates | Interactive Card

Pattern 54"	Content and Backing	Certifications	Weight/ Linear Yd.	Pattern Repeat	Finish	Abrasion Wyzenbeek	Light- Fastness	Flammability	Cleaning Code
<b>ARCADE</b> <i>Directional</i>	63% Polyurethane Polycarbonate/ 2% Silicone face, 35% Polyester backing	GREENGUARD	19 oz.	Non- Matching	WRITE AWAY® - Soil & Stain Resistant Top Coat with Ink Resistant Technology	1,000,000^ Double Rubs	300 hours	Cal. 117-2013 NFPA 260/UFAC Class 1	WS, BC, CFC
<b>CASPIAN</b> <i>Directional</i>	76% Polyester, 24% SEAQUAL® YARN (Post-Consumer Recycled Polyester) Backing: Acrylic	GREENGUARD Gold	17.89 oz.	.125" H, 2.5" V	Stain Repellent - PFAS Free	80,000^ Double Rubs	40 hours	Cal. 117-2013 NFPA 260/UFAC Class 1	WS, BC
<b>CONNECT</b> <i>Directional</i>	100% Post-Consumer Recycled Polyester Backing: Acrylic	GREENGUARD Gold	18.848 oz.	7.25" H, 10.75" V	Stain Repellent - PFAS Free	100,000^ Double Rubs	40 hours	Cal. 117-2013 NFPA 260/UFAC Class 1	WS, BC
<b>EDITOR</b> <i>Directional</i>	100% Polyester Backing: Crypton®	GREENGUARD Gold	24.39 oz.	.393" H, 0" V	Crypton® Green with Antimicrobial Silver Ion Technology	100,000^ Double Rubs	40 hours	Cal. 117-2013 NFPA 260/UFAC Class 1	W, C, BC
<b>FEDORA</b> <i>Directional Multi-use*</i>	100% Polyester Backing: Polyester	GREENGUARD Gold	17.2 oz.	None	Stain Repellent - PFOA Free	100,000^ Double Rubs	40 hours	Cal. 117-2013 NFPA 260/UFAC Class 1 ASTM E84 (Unadhered) Class 1 or A	W
<b>LOOP</b> <i>Directional</i>	100% Post-Consumer Recycled Polyester Backing: Acrylic	GREENGUARD Gold	13.488 oz.	14.5" H, 7.375" V	Stain Repellent - PFAS Free	80,000^ Double Rubs	40 hours	Cal. 117-2013 NFPA 260/UFAC Class 1	WS, BC
<b>MIDWAY</b> <i>Directional</i>	80% Vinyl - Phthalate Free face, 20% Polyester backing	GREENGUARD	28 oz.	18" H, 18" V Non- Matching	Soil & Stain Resistant Top Coat with Ink Resistant Technology	1,300,000^ Double Rubs	650 hours	Cal. 117-2013 NFPA 260/UFAC Class 1 BIFMA	W, BC, CFC
<b>NOBLE</b>	78% Vinyl - Phthalate Free face, 22% Polyester backing	GREENGUARD	30 oz.	None	Soil & Stain Resistant Top Coat with Ink Resistant Technology	100,000^ Double Rubs	300 hours	Cal. 117-2013 NFPA 260/UFAC Class 1 FMVSS 302	BC, CFC
<b>VERTEX</b> <i>Directional</i>	100% Post-Consumer Recycled Polyester Backing: Acrylic	GREENGUARD Gold	21.616 oz.	14.625" H, 34" V	Stain Repellent - PFAS Free	100,000^ Double Rubs	40 hours	Cal. 117-2013 NFPA 260/UFAC Class 1	WS, BC

### REDUCED ENVIRONMENTAL IMPACT

These products are GREENGUARD Certified or GREENGUARD Gold Certified for low chemical and particle emissions to UL standard UL 2818 and may contribute to LEED certification.

No FR Additive

No Antimicrobial/Antibacterial Additives  
**Arcade, Caspian, Connect, Fedora,  
Loop, Midway, Noble, Vertex**

PFAS Free  
**Arcade, Caspian, Connect, Editor  
Loop, Midway, Noble, Vertex**

### CARE AND CLEANING INFORMATION

W: Water-Based Cleaner    WS: Water/Solvent Cleaner    C: Crypton Cleaning

CFC: Coated Fabrics Cleaning – Refer to Mayer website for complete cleaning info.

Bleach Cleanable – 1 part bleach, 9 parts water = 10% bleach, 90% water solution. **Do not clean/disinfect fabric for longer than 10 minutes using the 10% bleach solution. Always rinse promptly with clean water after applying the bleach solution. Failure to do so will void any and all warranties.**

### DYE TRANSFER DISCLAIMER

Certain clothing and accessory dyes (such as those used on denim jeans) may migrate to lighter colors. This phenomenon is increased by humidity and temperature and is irreversible. Mayer Fabrics will not assume responsibility for dye transfer caused by external contaminants. Please check compatibility when using this product in combination with painted or varnished surfaces.

### ADDITIONAL INFORMATION

^Abrasion test results exceeding ACT Performance Guidelines are not an indicator of product lifespan. Multiple factors affect fabric durability and appearance retention.

\*A multi-use fabric that can be used for upholstery, panels, wrapped walls, and acoustic.

Warranty: Please refer to the Mayer website for warranty information by pattern.

Custom Colors: All patterns can be custom colored. Minimum yardage applies.

Digital Swatch Card Color Matching: Due to color variations on different monitors and color printers, actual swatch colors may vary slightly. Please request a memo sample from Mayer Fabrics to ensure proper color representation.

Complete and current product information available at [mayerfabrics.com](http://mayerfabrics.com).



These fabrics meet or exceed these ACT performance guidelines.  
\*Certification Marks owned by ACT\*

**Fedora**



This 100% polyester fabric is included in the Underwriter's Laboratory Fabric Recognition Program. Additional testing of this U.L. recognized component is not required on approved panels from participating manufacturers.

©2024  
AXISCD MF0224