



Hugg Pricebook

GRADED TEXTILES

2021



JAGUAR

Hi-Performance, Full Ergonomic Functions

Task - Operational - Management - Conference

How to: Specify Model & Calculate List Price	
1	JA1- \$766
2	41- \$0
3	11- \$0
4	11- \$78
5	11 \$0
\$844	
Model: JA1-41-11-11-11	

Basic List Price

1 JAG / Grade Cover		Zones	1	2	3	4	5
JA1-	GR1		938	1093	1274	1485	1730
JA2-	GR2/COM		992	1156	1348	1571	1831
JA3-	GR3/COL		1060	1235	1440	1678	1956
JA4-	GR4		1155	1346	1569	1829	2131
JA5-	GR5		1332	1552	1809	2109	2457

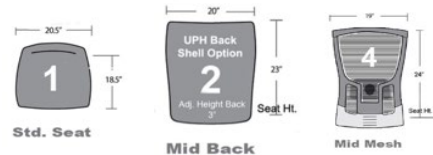
JAGUAR SEATING DIMENSIONS

Total Height:
 Uph LB 35" - 42" MB 38" - 45"
 Mesh MB 40" - 44" HB 46" - 50"

Total Width:
 Ht./Width Adj. arms Std Seat 27" - 31" Lg. Seat 29" - 33"
 Fixed / Fold Back Std Seat 27" Lg. Seat 29"

Seat Height:
 Std Base 17h-21" Spyder / Pol. Alum Base 18h-22h"

2 Back / Seat		COM yds	Add to List					
11-	Low Back / Std Seat	1 1/3	+	0	0	0	0	0
12-	Low Back / Lrg Seat *	1 1/2	+	78	92	110	131	155
21-	Mid Back / Std Seat	1 1/2	+	26	31	37	44	52
UB	UPH back shells	3/4	+	78	92	110	131	155
41-	MB Mesh / Std Seat	2/3	+	0	0	0	0	0



3 Control Mechanism		Add to List					
12-	Side-Adjust Syncro w/ Seat Slider	+	91	108	128	152	181
22-	Auto-Adjust Syncro w/ Seat Slider	+	191	208	228	252	281
62-	24 / 7 HD Syncro w/ Seat Slider	+	259	308	366	435	518



4 Arms - Pads		Add to List						
00-	No Arms	+	0	0	0	0	0	
11-	Adj. Height (Black / Black)	+	201	208	216	225	234	
12-	w/ Width Slider	+	214	222	231	241	251	
14-	Adj. Height (Black / Chr.)	+	85	92	100	109	118	
15-	w/ Width Slider	+	98	106	116	125	136	
21-	Fold Back - Adj. Height	+	85	92	100	109	118	
32-	C-Arm Fixed (Polyurethane)	+	129	154	183	218	259	
33-	C-Arm Fixed (Polished Alum)	+	129	154	183	218	259	



5 Base - Casters		Add to List						
Nylon Spyder 27"								
11-	w/ Black / Black (Carpet Casters)	+	0	0	0	0	0	
12-	w/ Silver / Black (Carpet Casters)	+	13	15	18	22	26	
13-	w/ Black / Black (Soft Casters)	+	26	31	37	44	52	
14-	w/ Silver / Black (Soft Casters)	+	39	46	55	65	78	
Polished Aluminum Spyder 27"								
15-	w/ Black / Black (Carpet Casters)	+	129	154	183	218	259	
16-	w/ Black / Black (Soft Casters)	+	155	185	220	261	311	
Nylon Standard Base								
21-	Hooded Carpet Casters	+	0	0	0	0	0	
22-	Hooded Soft Casters	+	26	25	25	26	27	
Standard Stool Base								
31-	For 36" Counter Height	SH 20"-26"	+	155	185	220	261	311
32-	For 42" Bar Height	SH 25"-34"	+	155	185	220	261	311
Spyder Stool Base								
41-	For 36" Counter Height	SH 21"-28"	+	168	200	238	283	337
42-	For 42" Bar Height	SH 27"-36"	+	168	200	238	283	337
Polished Aluminum Stool Base								
43-	For 36" Counter Height	SH 21"-28"	+	281	315	354	397	445
44-	For 42" Bar Height	SH 27"-36"	+	281	315	354	397	445



OPUS

Generous Size Design / Ergonomic Performance
Management - Executive - Conference Seating

How to: Specify Model & Calculate List Price		
1	OP1-	\$888
2	21-	\$56
3	11-	\$0
4	11-	\$78
5	11	\$0
		\$1022
Model: OP1-21-11-11-11		

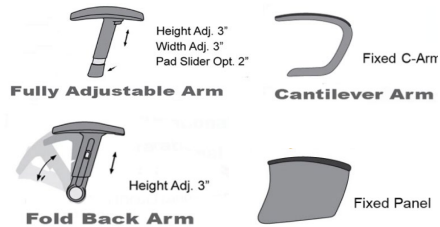
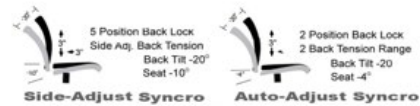
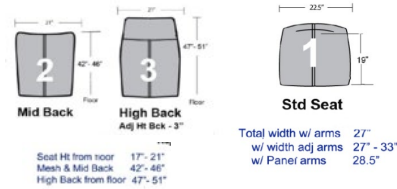
1	OPUS / Gr. Cover	Zones	Basic List Price				
			1	2	3	4	5
	OP1- GR1	+	1087	1267	1477	1721	2006
	OP2- GR2/COM	+	1156	1347	1569	1828	2131
	OP3- GR3/COL	+	1278	1489	1735	2023	2358
	OP4- GR4	+	1413	1648	1920	2238	2608
	OP5- GR5	+	1631	1901	2215	2582	3009

2	Back - Seat	COM yds	st					
				1	2	3	4	5
	21- Mid Back / Std Seat	2 1/2	+	65	77	92	109	129
	31- High Back / Std Seat	3	+	259	308	366	435	518

3	Control Mechanism	Add to List					
		1	2	3	4	5	
	12- Side-Adjust Syncro w/ Seat Slider	+	91	108	128	152	181
	22- Auto-Adjust Syncro w/ Seat Slider	+	191	208	228	252	281
	62- 24 / 7 HD Syncro w/ Seat Slider	+	259	308	366	435	518

4	Arms - Pads	Add to List					
		1	2	3	4	5	
	00- No Arms	+	0	0	0	0	0
	11- Adj. Height (Black / Black)	+	201	208	216	225	234
	12- w/ Width Slider	+	214	222	231	241	251
	14- Adj. Height (Black / Chr.)	+	85	92	100	109	118
	15- w/ Width Slider	+	98	106	116	125	136
	21- Fold Back - Adj. Height	+	85	92	100	109	118
	32- C-Arm Fixed (Polyurethane)	+	129	154	183	218	259
	33- C-Arm Fixed (Polished Alum)	+	129	154	183	218	259
	51- Panel Arm - Uph Cap	+	459	508	566	635	718
	53- Panel Arm - Wood Cap	+	588	662	749	853	977

5	Base - Casters	Add to List				
		1	2	3	4	5
	Nylon Spyder 27"					
	11- w/ Black / Black (Carpet Casters)	+	0	0	0	0
	12- w/ Silver / Black (Carpet Casters)	+	13	15	18	22
	13- w/ Black / Black (Soft Casters)	+	26	31	37	44
	14- w/ Silver / Black (Soft Casters)	+	39	46	55	65
	Polished Aluminum Spyder 27"					
	15- w/ Black / Black (Carpet Casters)	+	129	154	183	218
	16- w/ Black / Black (Soft Casters)	+	155	185	220	261
	Nylon Standard Base					
	21- Hooded Carpet Casters	+	0	0	0	0
	22- Hooded Soft Casters	+	26	25	25	26
	Wood Base					
	31- Black Carpet Casters	+	129	154	183	218
	32- Black Soft Casters for hard surfaces	+	155	185	220	261
	Specify Finish on PO (Standard Finish)					
	Custom Finish	+	292			



LEON

Generous Size Design / Ergonomic Performance
Management - Executive - Conference Seating

How to: Specify Model & Calculate List Price		
1	LE1-	\$888
2	21-	\$0
3	11-	\$0
4	11-	\$78
5	21	\$0
		\$966
Model: LE1-21-11-11-21		

Basic List Price

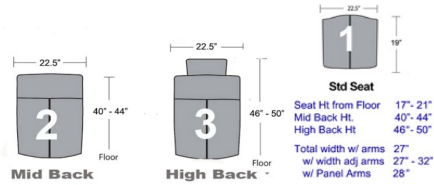
1	LEON / Gr. Cover	Zones	1	2	3	4	5
	LE1- GR1	+	1035	1056	1077	1099	1121
	LE2- GR2 / COM	+	1101	1122	1145	1167	1190
	LE3- GR3 / COL	+	1203	1228	1252	1277	1302
	LE4- GR4	+	1333	1360	1386	1415	1443
	LE5- GR5	+	1528	1558	1590	1620	1653

2	Back / Seat	COM yds	Add to List	1	2	3	4	5	
	21- Mid / Std	2 1/4	+	0	0	0	0	0	
	31- w/ Headrest	2 1/2	+	129	154	183	218	259	
	Add Code Below to # Above if option desired i.e. 21UB-								
	UB UPH back shells	1	+	78	92	110	131	155	

3	Control Mechanism	Add to List	1	2	3	4	5
	12- Side-Adjust Syncro w/ Seat Slider	+	91	108	128	152	181
	22- Auto-Adjust Syncro w/ Seat Slider	+	191	208	228	252	281
	62- 24 / 7 HD Syncro w/ Seat Slider	+	259	308	366	435	518

4	Arms - Pads	Add to List	1	2	3	4	5
	00- No Arms	+	0	0	0	0	0
	14- Adj. Height (Black / Chr.)	+	201	208	216	225	234
	15- w/ Width Slider	+	214	222	231	241	251
	21- Fold Back - Adj. Height	+	77	92	100	109	118
	32- C-Arm Fixed (Polyurethane)	+	129	154	183	218	259
	33- C-Arm Fixed (Polished Alum)	+	129	154	183	218	259
	51- Panel Arm - Uph Cap	+	459	508	566	635	718
	53- Panel Arm - Wood Cap	+	588	662	749	853	977

5	Base - Casters	Add to List	1	2	3	4	5	
	Nylon Spyder 27"							
	11- w/ Black / Black (Carpet Casters)	+	0	0	0	0	0	
	12- w/ Silver / Black (Carpet Casters)	+	13	15	18	22	26	
	13- w/ Black / Black (Soft Casters)	+	26	31	37	44	52	
	14- w/ Silver / Black (Soft Casters)	+	39	46	55	65	78	
	Polished Aluminum Spyder 27"							
	15- w/ Black / Black (Carpet Casters)	+	129	154	183	218	259	
	16- w/ Black / Black (Soft Casters)	+	155	185	220	261	311	
	Nylon Standard Base							
	21- Hooded Carpet Casters	+	0	0	0	0	0	
	22- Hooded Soft Casters	+	26	25	25	26	27	
	Wood Base							
	31- Black Carpet Casters	+	129	154	183	218	259	
	32- Black Soft Casters for hard surfaces	+	155	185	220	261	311	
	Specify Finish on PO (Standard Finish)							
	Custom Finish	+	292					



hickory contract

HUGG TEXTILE GRADES

MORBERN | ALLANTE VINYL | GRADE 1
MAYER | FOUNDATION | GRADE 1
MAYER | SPECTRUM | GRADE 1
SPRADLING | DOLCE POLYURETHANE | GRADE 2
CF STINSON | STAPLE | GRADE 2
MOMENTUM | ENDURANCE | GRADE 2
MAYER | NEO | GRADE 2
BRISA | GRADE 3
ULTRALEATHER | GRADE 3
CLASSICO LEATHER | GRADE 4

MORBERN | ALLANTE VINYL
Grade #1



MAYER | FOUNDATION
Grade #1



CF STINSON | STAPLE
Grade #2



SPRADLING | DOLCE POLYURETHANE
Grade #2



MOMENTUM | ENDURANCE
Grade #2



MAYER | NEO
Grade #2



ULTRAFABRICS | BRISA
Grade #3



ULTRA FABRICS | ULTRALEATHER
Grade #3



CLASSICO LEATHER
Grade #4



SPECTRUMCOLLECTION

GRADE 1



GRADE 1



THEORY
423-037 Alabaster



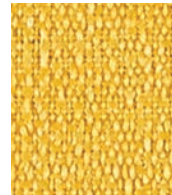
CONTINUUM
422-026 Dove



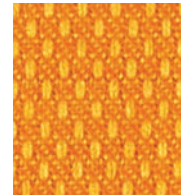
THEORY
423-016 Charcoal



THEORY
423-017 Stone



CONTINUUM
422-002 Saffron



VARIANT
425-019 Orange Peel



PRISM
426-027 Zinc



PRISM
426-026 Dove



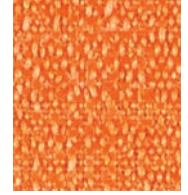
CONTINUUM
422-036 Iron



CONTINUUM
422-027 Stone



PRISM
426-002 Topaz



CONTINUUM
422-009 Mandarin



THEORY
423-026 Dove



VARIANT
425-016 Flint



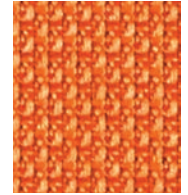
PRISM
426-016 Charcoal



PRISM
426-017 Stone



VARIANT
425-002 Mustard



OPTIC
424-009 Sunrise



VARIANT
425-017 Creme



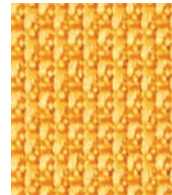
OPTIC
424-026 Elephant



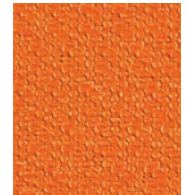
OPTIC
424-006 Ash



THEORY
423-010 Mocha



OPTIC
424-019 Tangerine



THEORY
423-009 Mango



CONTINUUM
422-017 Almond



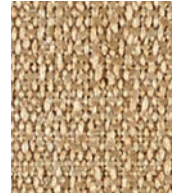
VARIANT
425-026 Aluminum



VARIANT
425-006 Carbon



PRISM
426-010 Mocha



CONTINUUM
422-007 Cafe Au Lait



PRISM
426-021 Tomato



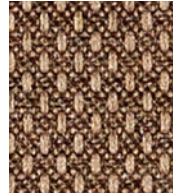
VARIANT
425-007 Biscuit



CONTINUUM
422-016 Charcoal



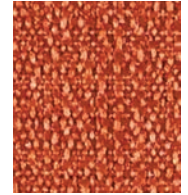
CONTINUUM
422-006 Onyx



VARIANT
425-000 Chocolate



THEORY
423-007 Cafe Au Lait



CONTINUUM
422-019 Brick



OPTIC
424-017 Fieldstone



OPTIC
424-016 Coal



THEORY
423-006 Onyx



CONTINUUM
422-000 Espresso



VARIANT
425-010 Cocoa



PRISM
426-019 Clay



OPTIC
424-007 Mushroom



PRISM
426-006 Onyx



OPTIC
424-000 Brown Bear



THEORY
423-000 Espresso



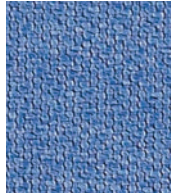
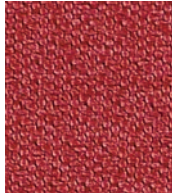
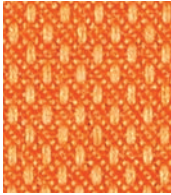
PRISM
426-007 Cafe Au Lait



THEORY
423-019 Tobacco

Additional colors are available. Please refer to the Mayer Fabrics website.

GRADE 1



ONT
422-026
VARIANT
425-009 Persimmon

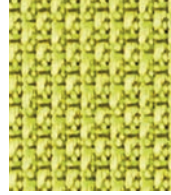
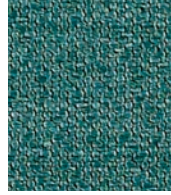
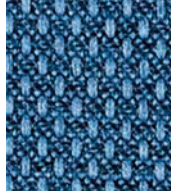
THEORY
423-011 Rouge

THEORY
423-024 Slate

PRISM
426-034 Cerulean

CONTINUUM
422-023 Citrine

VARIANT
425-013 Jungle



PRISM
426-009 Clementine

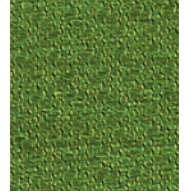
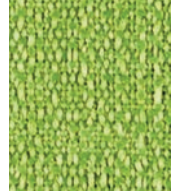
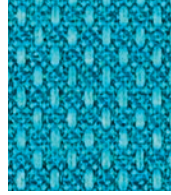
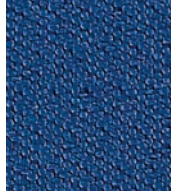
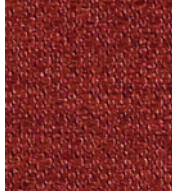
VARIANT
425-005 Aubergine

VARIANT
425-004 Ink

THEORY
423-044 Teal

OPTIC
424-013 Green Apple

PRISM
426-003 Kale



PRISM
426-011 Claret

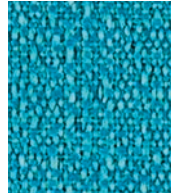
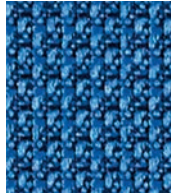
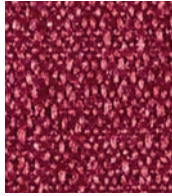
THEORY
423-008 Port

THEORY
423-014 Indigo

VARIANT
425-014 Prussian

CONTINUUM
422-003 Spring

THEORY
423-003 Grass



OPTIC
424-026
VARIANT
425-001 Barn Red

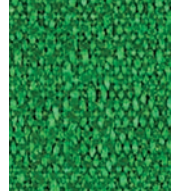
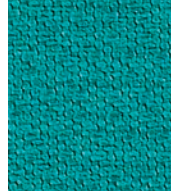
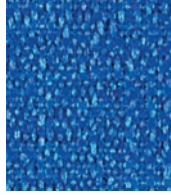
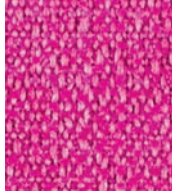
CONTINUUM
422-008 Beet

OPTIC
424-004 Yale

CONTINUUM
422-044 Ocean

OPTIC
424-023 Springtime

PRISM
426-013 Olive



OPTIC
424-026
VARIANT
425-001 Barn Red

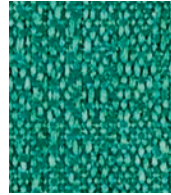
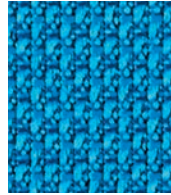
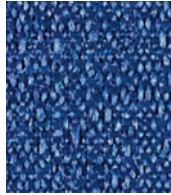
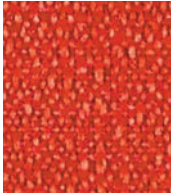
CONTINUUM
422-005 Magenta

CONTINUUM
422-014 Electric

THEORY
423-034 Peacock

CONTINUUM
422-013 Emerald

THEORY
423-023 Grove



CONTINUUM
422-016 Coral Lipstick

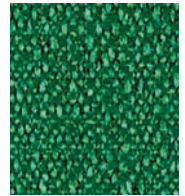
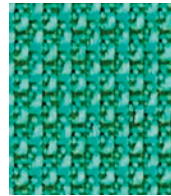
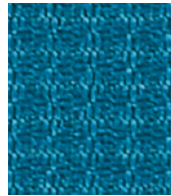
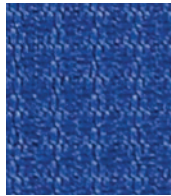
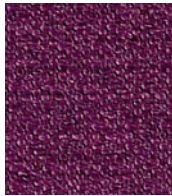
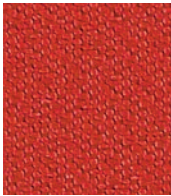
THEORY
423-015 Raspberry

CONTINUUM
422-004 Indigo

OPTIC
424-024 Ocean

CONTINUUM
422-033 Pine

PRISM
426-023 Asparagus



THEORY
424-016 Coral Lipstick

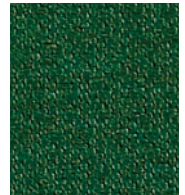
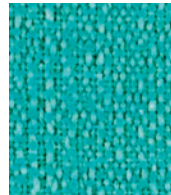
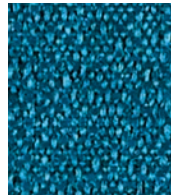
THEORY
423-005 Aubergine

PRISM
426-004 Indigo

PRISM
426-024 Caribbean

OPTIC
424-033 Myrtle

CONTINUUM
422-043 Bottle



PRISM
426-001 Lipstick

PRISM
426-005 Plum

THEORY
423-004 Navy

CONTINUUM
422-024 Caribbean

CONTINUUM
422-034 Turquoise

THEORY
423-013 Evergreen

Additional colors are available. Please refer to the Mayer Fabrics website.